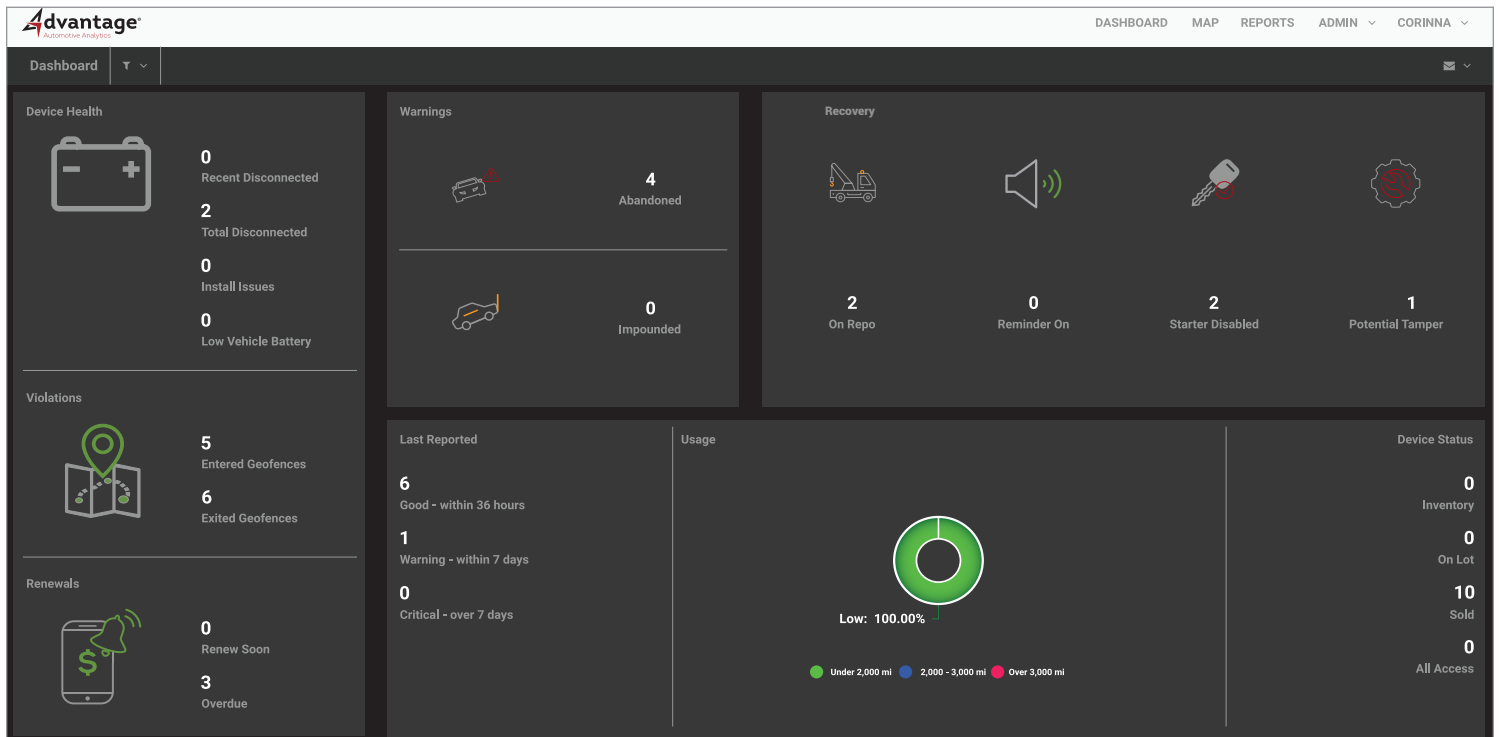


INTELLIGENT COLLATERAL PROTECTION & PORTFOLIO RISK MITIGATION

Real Time Automotive Analytics Dashboard



The Advantage interactive dashboard allows for high-level and vehicle-specific, granular oversight of your automotive finance portfolio.

- Real-time portfolio health monitoring
- Device and vehicle health heartbeats
- Rapid recovery portal
- Instant impound lot notifications
- Customized geofences
- Access entire device portfolio regardless of brand
- Automated renewal notifications
- Monitor analytics on computer and/or mobile app



Advantage has changed our expectations for tracking our vehicles! Their dashboard is by FAR the most user friendly and their devices are by FAR the most reliable! Everyone at Advantage goes above and beyond to help us recover our vehicles...they have really become an extension to our team.

Advantage GPS Customer
Arlington, Texas

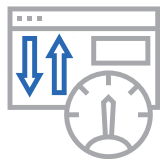
POWERFUL INTERACTIVE AUTOMOTIVE ANALYTICS

Helps You Prioritize Profit Obstacles



Predictive Analytics

AI-technology groups data into risk categories, giving you an intelligent analytical overview of your automotive finance portfolio.



Interactive Data

Drilldown into vehicle-specific data for details. Allows you to proactively take action to protect your bottom line.



Device Health

Alerts you when devices have been disconnected, identifies install issues and monitors battery voltage on vehicle.



Warnings

Keeps track of vehicles that have not moved for 7+ days or vehicles that enter into impound yards.



Recovery

Identifies the vehicles on repo, with payment reminders on, starter disabled initiated and potential tamper alerts triggered.



Violations

Alerts you when a vehicle enters or exits a geofence or boundary defined by you.



Last Reported

Identifies devices that have recorded a heartbeat within the past 36 hours & alerts you on those which have not within 7 or more days.



Ride Share Warnings

Keeps track of vehicle mileage. Helps identify vehicles being used for ride sharing (Uber, Lyft).



Device Status

Identifies devices in inventory, units installed in vehicles sold & units installed on new vehicles for sale on lot.



All Access

Manage entire device portfolio. Keeps track of entire inventory, including devices purchased from other GPS providers.



Renewals

Manage your airtime subscriptions right online. Notifies you of upcoming renewals & ones that are past due.



Monitor Your Way

Access your data using any computer, download mobile app or schedule dashboard to come to your email.